




QI Power Hour

**INFORMED PLANNING WITHIN
THE SASKATCHEWAN HEALTH
AUTHORITY - Health System
Measurement, Driver
Diagrams, and Knowledge
Translation**

With BRAD BOUTILIER, NICOLE
FERGUSON, JOSH MARKO & LAURA
SCHWARTZ



Welcome to QI Power Hour

Connect to audio using **Audio Broadcast**:

Audio Broadcast


Click the button to start the broadcast.

Go Live Stop

Phone, TV, Email, Social, Print

? Do you have questions about connecting to audio? Use the **chat function** to message the Host, QI Power Hour, for assistance.

With past Chat





QI Power Hour

**INFORMED PLANNING WITHIN
THE SASKATCHEWAN HEALTH
AUTHORITY - Health System
Measurement, Driver
Diagrams, and Knowledge
Translation**


With BRAD BOUTILIER, NICOLE
FERGUSON, JOSH MARKO & LAURA
SCHWARTZ



TREATY 6 TERRITORY & HOMELAND OF THE METIS

HQC is situated on Treaty 6 Territory and the Homeland of the Metis.

We pay respect to the treaties that were made on this land and acknowledge the harms and mistakes of the past. We are committed to move forward in partnership with Indigenous Nations in the spirit of reconciliation and collaboration.



4


Connect to Audio using Audio Broadcast

Access past QI Power Hour sessions

Past QI Power Hour webinars (with download links)


Health Networks in Saskatchewan (QI Power Hour)

Nov 12, 2019 at 9:00 AM




Citizen Science in Public Health Policy: Leveraging the Power of Ubiquitous Tools

Oct 25, 2019 at 9:00 AM



The Costs of Poverty for Saskatchewan: What Do They Matter and How Do We Calculate Them? (QI Power Hour)


Sept 6, 2019 at 9:00 AM

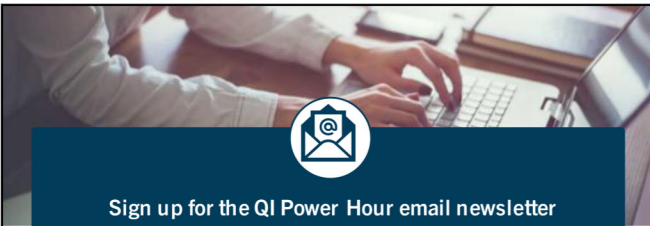



[Visit our website to view past sessions!](#)

5

Connect to Audio using Audio Broadcast








Sign up for the QI Power Hour email newsletter

Receive notices about upcoming sessions and details on how to register straight to your in your inbox.

[Visit: bit.ly/qiphp_subscribe](mailto:bit.ly/qiphp_subscribe)

6

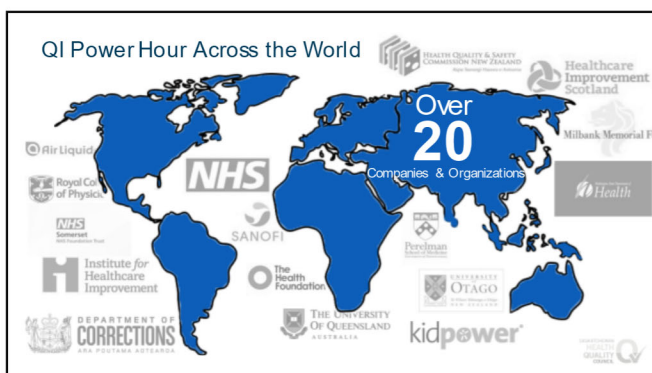
Connect to Audio using Audio Broadcast



2



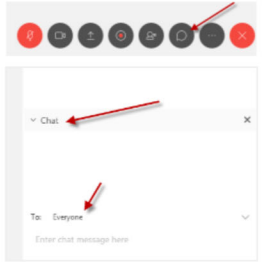




Webex tool: chat function

Chat functions:


- Share [questions](#), [comments](#), and [ideas](#)
- Click on the message bubble icon to access the chat
- Send to [Everyone](#)



10

Connect to Audio using AudioBroadcast

SASKATCHEWAN HEALTH AUTHORITY



QI Power Hour

INFORMED PLANNING WITHIN THE SASKATCHEWAN HEALTH AUTHORITY - Health System Measurement, Driver Diagrams, and Knowledge Translation

With BRAD BOUTLIER, NICOLE FERGUSON, JOSH MARKO & LAURA SCHWARTZ

SASKATCHEWAN HEALTH AUTHORITY

Saskatchewan Health Authority

Informed planning within the Saskatchewan Health Authority

Health system Measurement, Driver Diagrams, and Knowledge Translation (QI Power Hour)

January 27, 2023

Healthy People, Healthy Saskatchewan

The Saskatchewan Health Authority works in the spirit of truth and reconciliation, acknowledging Saskatchewan as the traditional territory of First Nations and Métis People.

www.saskatchewan.ca

SASKATCHEWAN HEALTH AUTHORITY





Brad Boutlier is a Strategy and Innovation Specialist from Swift Current. His background is in communications, he's an avid golfer, and enjoys spending time with his wife Erin and their two children.



Josh Meko has a Master's in Public Health and a background in Health Care Administration, Health Policy and Ecosystem approaches to human health. He is an epidemiologist with the Population Health Department, based out of Saskatoon. Cyclist and proud dad of two.



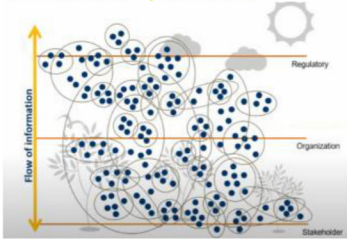
Laura Schwartz has a Master's in Community Health and Epidemiology and is a Strategy and Innovation specialist based out of Saskatoon. She has been working with measurement in healthcare for the last 10 years. Proud mom of two young girls and lover of all things coffee.





Nicole Ferguson is a mom to two active and busy, young boys and has called many communities within Treaty 4 Territory home over the course of her life. She is a big picture focused facilitator who enjoys helping groups of people understand each other's views, build relationships to move forward together, and create plans to achieve their shared goals.

Our Health System is Complex

Working Together with other Health System Partners



(Source unknown)

Start with our Why

Progress Towards our Vision


Healthy People, Healthy Saskatchewan

By working together in the spirit of safety, accountability, respect, collaboration and compassion

Patient and Family Centred



by SIMON SINEK




Planning to achieve our purpose

SHA Strategic Planning Process

Saskatchewan Health Authority

[www.saskatchewan.ca](#)

Environmental Scanning

Internal and External Context

Board Retreat Planning Package

STRATEGIC PLANNING PLACEMAT | 2022

AN ENVIRONMENTAL SCAN OF OUR CURRENT STATE:

Who are we serving?
What are our patients saying?
How are we performing?
What are our Strengths, Weaknesses, Opportunities, Threats?

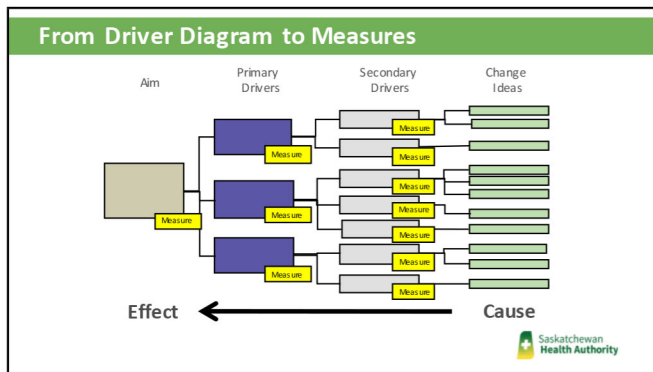
Saskatchewan Health Authority

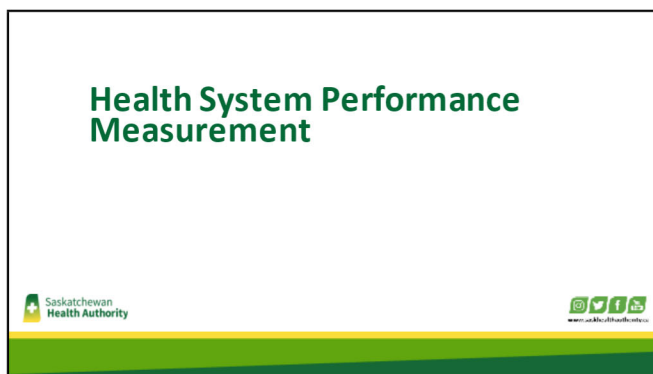
[www.saskatchewan.ca](#)

Monitoring performance - Driver Diagrams and the Health System indicators

Saskatchewan Health Authority

[www.saskatchewan.ca](#)





Performance Measurement - Health System Indicators

What are health system indicators and performance measurement cascades?

- Health system indicators (HSIs) are a tool designed to give an overview of system performance that is both standardized and comparable to other health jurisdictions in Canada.
- This work is designed to bring attention to performance across the full spectrum of health service delivery including: social determinants, community, acute care, continuing care, and more.
- This work is a joint effort between the Saskatchewan Health Authority, the Saskatchewan Ministry of Health and Health Quality Council.

High Performing Health Systems...	Health System Measure
Reduce Time	Accessible Services
Reduce Complications/Errors	Hospital Mort
Release Patients from Hospital Sooner	ALC Days
Re-admitted Case Frequency	30 Day Readmission
Experience Few Deaths within 30 days of admission	Hospital Standardized Mortality Ratio (sMOR)
Shorter Wait Times in the ED	ED Length of Stay
Optimal End of Life Care	Hospital Days in the Last 6 months of life
Improve Patient Satisfaction	Measures being developed in partnership with the PHNs
Support Mental Wellbeing of Our Employees	PHNs working group
Reduce Cost per Capita	30 DAY ED LOS/ADMIT
Mortality Amenable to Healthcare	Cost per Standard Hospital Day
Improve Health Status of the Population	Accessible Mortality
Infant Mortality	Self Reported Health
Life Expectancy	Infant Mortality
Reduce Chronic Condition Hospitalizations	Life Expectancy at Birth
Improved Equity	NSIC admissions
Improve Health and Wellbeing in the Early Years	Existing measures stratified by equity, where appropriate
	Early Years Evaluation Score

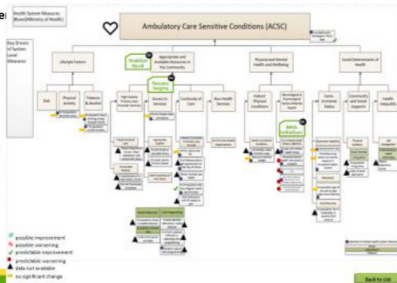
Saskatchewan Health Authority

www.saskatchewan.ca

Performance Measurement Cascades

Why do these indicators and cascades matter?

- Health system indicators identify where we need to improve. Performance measurement cascades identify what we need to do to improve.
- They health system cascades are a method of aligning strategies, tactical actions and measures together to achieve a common goal.
- The cascades use the driver diagram concept to break large outcomes into smaller, more manageable pieces.



Performance Measurement Cascades

How can we identify improvement?

- Plotting indicator data on graphs such as control charts and run charts that display data over time help us to identify when improvements are occurring or where things may be worsening.
- If the overall Health System Indicator is changing, we can review measures from further down the cascade to identify where that change may be coming from.



“The greatest value of a picture is when it forces us to notice what we never expected to see.”
John W. Tukey



E-Scan Placemat Document

Summarizing Multiple Data Sources to Inform Planning

- Tasked with telling a story about the current state.
- Easy to read. Easy to understand. Easy to digest.
- On-brand; SHA visual identity standards adherence.
- Impact on planning analysis for each section.
- Accessible electronically while also being a printed handout
- Decision to use placemat format that would be available to executive leaders and board members on in-person planning dates.



Initial Wireframes

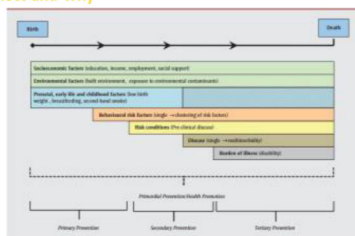
Identifying Key Planning Elements





Health Measurement Indicators

What did we select and why

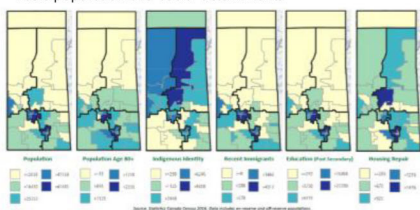


Betancourt et al.
2014. Chronic
Diseases and
Injuries in
Canada. 34;S1:1-30

Health Measurement Indicators

What did we select and why

Demographics – Basic population and social determinants



Health Measurement Indicators

What did we select and why


Health of our population – Mix of risk and protective factors, early life and risk conditions



Health Measurement Indicators

What did we select and why

Public Health – primarily outcomes with some practices.



Saskatchewan Health Authority

www.saskatchewan.ca

Health Measurement Indicators

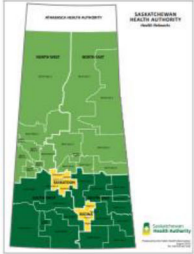
Health Network Profiles

- For local planning teams, granular data is a necessity.
- Many of the same domains as in the “placemat” document just grouped differently

Saskatchewan Health Authority

www.saskatchewan.ca

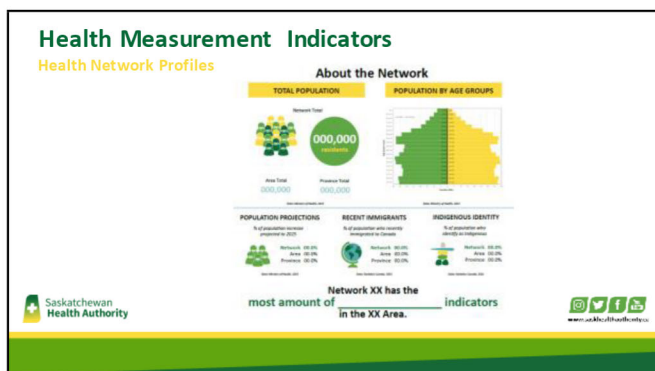
Health Networks

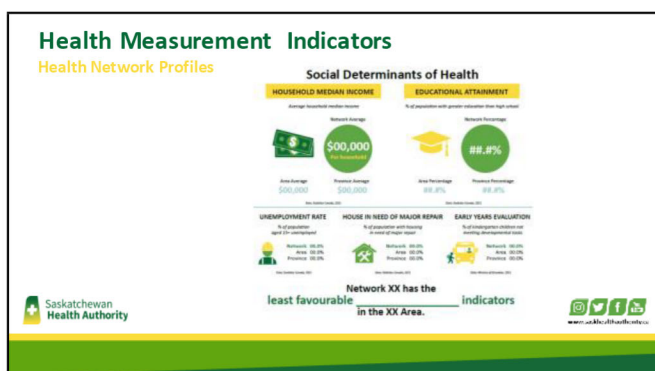


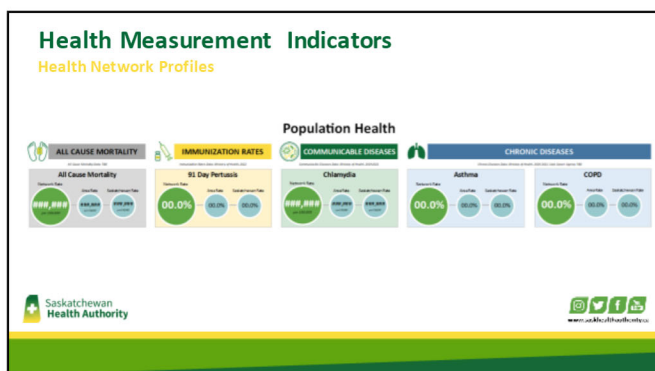
- Health Networks are collaborative teams of health professionals, including physicians and community partners providing fully integrated services to meet the health needs of individuals and communities.
- Health Networks provide the right care, at the right time, from the right health care provider, as close to home as possible

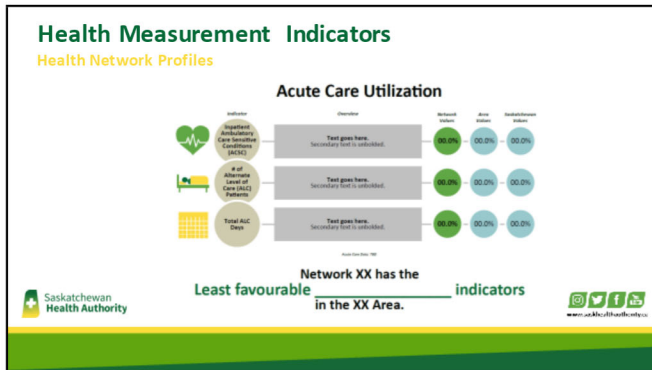
Saskatchewan Health Authority

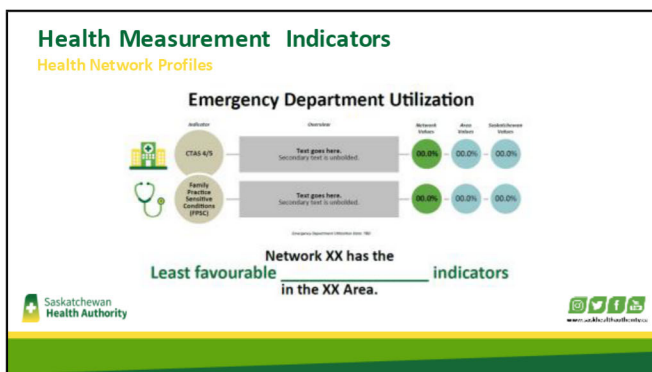
www.saskatchewan.ca













Putting the E-scan Placemat to Work

Fall Planning

Multiyear Planning – 4 Year Plan <ul style="list-style-type: none"> September - ELT Retreat October – ELT and Board Retreat 	Annual Planning – 1 Year Plan <ul style="list-style-type: none"> December - ELT Planning Session December – ELT and SLT Quarterly Review
--	---

Saskatchewan Health Authority

Putting the E-scan Placemat to Work

Fall Planning

Saskatchewan Health Authority

Putting the Health Network Profiles to Work

Health Network Plans

Saskatchewan Health Authority

Any Questions? Feel free to reach out!

nicole.ferguson@saskhealthauthority.ca

jaura_schwartz@saskhealthauthority.ca

brad.boutiller@saskhealthauthority.ca

josh.marko@saskhealthauthority.ca



Do you want I❤QI socks?

Become a QI Power Hour speaker!

➡ [Visit our website to learn more!](#)



65

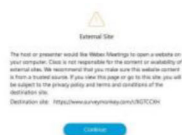
Connect to Audio using AudioBroadcast



Post webinar survey

In the spirit of quality improvement, we will be sending out a survey after the webinar.

You may see this message, but don't be alarmed, our survey is on a trusted site!



65

Connect to Audio using AudioBroadcast



Next up...

**MEN OF THE NORTH – A MALE
MENTAL HEALTH SUPPORT
PROGRAM**

With CHRISTOPHER MERASTY

February 10, 2023

9:30 am – 10:30 am

To register, [visit our events page](#)